



WHEEL

HARDWARE



WHEEL HARDWARE

CONTENTS

WHEEL HARDWARE

LUG NUTS

..... 49-51

WHEEL STUDS

..... 52-53

ASSORTMENTS

..... 54

SPECIALTY WHEEL BOLTS

..... 54

WHEEL HARDWARE

LUG NUTS



WN-005-B



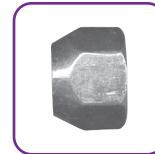
WN-007-B



WN-008-B



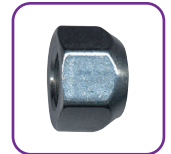
WN-011-B



WN-16-B



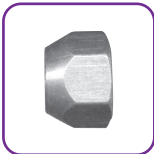
WN-27-B



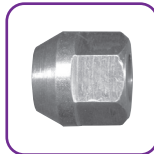
WN-52-B



WN-53-B



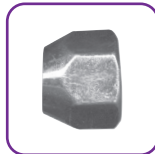
WN-62-B



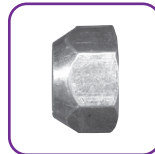
WN-63-B



WN-64-B



WN-65-B



WN-66-B



WN-71-B



WN-72-B



WN-74-B



WN-75-B



WN-76-B



WN-84-B



WN-93-B



WN-94-B

Part No.	Description	Thread Size	Hardware Type	Hex Size	Length	Finish	Box Qty.
WN-005-B	Wheel Bolt	M12-1.25	60° Acorn Conical Seat	19mm	23mm	Chrome	5
WN-007-B	Lug Nut	M14-1.50	Dometop Cap	21mm	38.5mm	Chrome	5
WN-008-B	Lug Nut	M14-1.50	Dometop Cap	21mm	44.5mm	Chrome	5
WN-011-B	Lug Nut	M14-1.50	Dometop Cap	22mm	38.5mm	Chrome	5
WN-16-B	Lug Nut	1/2"-20	Standard	13/16in	5/8in	Zinc	10
WN-27-B	Lug Nut	1/2"-20	Standard	3/4in	9/16in	Zinc	10
WN-52-B	Lug Nut	9/16"-18	Standard	7/8in	3/4in	Zinc	10
WN-53-B	Lug Nut	9/16"-18	Standard	1in	21/32in	Zinc	10
WN-62-B	Lug Nut	M12-1.50	Standard	19mm	14mm	Zinc	10
WN-63-B	Lug Nut	M12-1.50	Bulge	19mm	23mm	Zinc	10
WN-64-B	Lug Nut	M12-1.25	Standard	19mm	16mm	Chrome	10
WN-65-B	Lug Nut	M12-1.25	Standard	21mm	16mm	Zinc	10
WN-66-B	Lug Nut	M12-1.50	Standard	21mm	16mm	Zinc	10
WN-71-B	Lug Nut	1/2"-20	Dometop Cap	13/16in	15/32in	Chrome	5
WN-72-B	Lug Nut	M12-1.50	Standard	21mm	18mm	Zinc	10
WN-74-B	Lug Nut	M12-1.50	Bulge Acorn	3/4"	1.38"	Chrome	5
WN-75-B	Lug Nut	M12-1.50	Acorn	19mm	24.5mm	Chrome	5
WN-76-B	Lug Nut	M12-1.25	Acorn	19mm	24mm	Chrome	5
WN-84-B	Lug Nut	M12-1.50	Dometop Cap	19mm	36mm	Stainless	5
WN-93-B	Lug Nut	1/2"-20	Bulge	13/16in	15/16in	Zinc	5
WN-94-B	Lug Nut	1/2"-20	Dometop Cap	3/4in	1-5/8in	Chrome	5
WN-99-B	Lug Nut	M12-1.25	Acorn	21mm	35mm	Chrome	5

WHEEL HARDWARE

LUG NUTS continued



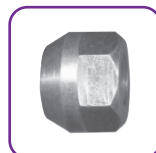
WN-99-B



WN-102-B



WN-109-B



WN-110-B



WN-114-B



WN-115-B



WN-117-B



WN-122-B



WN-133-B



WN-136-B



WN-138-B



WN-141-B



WN-144-B



WN-150-B



WN-162-B



WN-163-B



WN-167-B



WN-172-B



WN-181-B



WN-182-B



WN-196-B

Part No.	Description	Thread Size	Hardware Type	Hex Size	Length	Finish	Box Qty.
WN-99-B	Lug Nut	M12-1.25	Acorn	21mm	35mm	Chrome	5
WN-102-B	Lug Nut	1/2"-20	Mag	13/16in	1.454in	Chrome Chrome Specialty	5
WN-109-B	Lug Nut	M12-1.50	External	19mm	27.5mm	Zinc	5
WN-110-B	Lug Nut	M14-1.50	Bulge	22mm	20.5mm	Zinc	5
WN-114-B	Lug Nut	M12-1.25	Acorn	21mm	29mm	Chrome	5
WN-115-B	Lug Nut	M14-1.50	External Thread	22mm	28.5mm	Zinc	5
WN-117-B	Lug Nut	M12-1.50	Mag	21mm	37mm	Chrome	5
WN-122-B	Lug Nut	1/2"-20	Dometop Cap	3/4in	5/16in	Stainless	5
WN-133-B	Lug Nut	M12-1.5	Acorn	21mm	1.20in	Chrome	5
WN-136-B	Lug Nut	M12-1.50	Dometop Cap	19mm	37mm	Stainless	5
WN-138-B	Lug Nut	M12-1.50	Acorn	19mm	35mm	Chrome	5
WN-141-B	Lug Nut	M12-1.50	Acorn	21mm	26mm	Chrome	5
WN-144-B	Lug Nut	M12-1.50	Bulge	19mm	19.5mm	Chrome	5
WN-150-B	Lug Nut	M12-1.50	External Thread	19mm	31mm	Zinc	10
WN-162-B	Lug Nut	9/16"-18	Bulge	15/16in	1/32in	Zinc	5
WN-163-B	Lug Nut	1/2"-20	Bulge	3/4in	29/32in	Zinc	5
WN-167-B	Lug Nut	M12-1.50	Mag	21mm	47mm	Chrome	5
WN-172-B	Lug Nut	M12-1.75	Flanged	19mm	22.5mm	Black Steel	5
WN-181-B	Lug Nut	M12-1.50	Flattop Cap	19mm	43.1mm	Stainless	5
WN-182-B	Lug Nut	M12-1.5	Acorn	21mm	35.1mm	Chrome	5
WN-196-B	Lug Nut	M14-2.0	Flanged	21mm	22.6mm	Black Steel	5

WHEEL HARDWARE

LUG NUTS continued



WN-201-B



WN-204-B



WN-210-B



WN-211-B



WN-223-B



WN-236-B



WN-246-B



WN-253-B



WN-277-B



WN-288-B



WN-294-B



WN-301-B



WN-303-B



WN-315-B



WN-317-B



WN-327-B



WN-330-B



WN-331-B



WN-549-B



WN-964-B

Part No.	Description	Thread Size	Hardware Type	Hex Size	Length	Finish	Box Qty.
WN-201-B	Lug Nut	M12-1.50	Acorn	19mm	29.5mm	Chrome	5
WN-204-B	Lug Nut	9/16"-18	Flattop Acorn	7/8in	1/2in	Steel	5
WN-210-B	Lug Nut	M12-1.25	Dometop Cap	21mm	29mm	Chrome	5
WN-211-B	Lug Nut	M12-1.50	Mag	21mm	36.5mm	Chrome	5
WN-223-B	Lug Nut	M14-2.0	Wheel Cover Retaining	21mm	30.56mm	Chrome	5
WN-236-B	Lug Nut	M14-1.50	Flattop	22mm	44.5mm	Chrome	5
WN-246-B	Lug Nut	M14-1.50	Flanged mm Hex	21mm	23.2mm	Black Steel	5
WN-253-B	Lug Nut	M12-1.50	Acorn	21mm	31.5mm	Chrome	5
WN-277-B	Lug Nut	M14-1.50	Acorn	22mm	46mm	Chrome	5
WN-288-B	Lug Nut	M14-2.0	Dometop Cap	21mm	54mm	Chrome	5
WN-294-B	Lug Nut	M12-1.25	Dometop Cap	21mm	38.6mm	Chrome	5
WN-301-B	Lug Nut	M12-1.50	Dometop Cap	19mm	30.4mm	Steel	10
WN-303-B	Lug Nut	M12-1.50	Dometop Cap	19mm	32.1mm	Chrome	5
WN-315-B	Lug Nut	M12-1.50	Acorn	21mm	34.8mm	Chrome	5
WN-317-B	Lug Nut	M12-1.25	Acorn	21mm	25.8mm	Chrome	5
WN-327-B	Lug Nut	M14-1.50	Acorn Bulge	22mm	28.4mm	Chrome	5
WN-330-B	Lug Nut	M14-1.50	Dometop Cap	22mm	38.5mm	Chrome	5
WN-331-B	Lug Nut	M14-1.50	Dometop Cap	21mm	34.8mm	Chrome	5
WN-549-B	Wheel Bolt	M12-1.50	60° Acorn Conical Seat	12mm	24mm	Chrome	5
WN-964-B	Lug Nut	M12-1.50	Bulge	19mm	23mm	Carbon Steel	5

WHEEL HARDWARE

WHEEL STUDS



WS-004-B



WS-109-B



WS-138-B



WS-159-B



WS-219-B



WS-244-B



WS-254-B



WS-266-B



WS-269-B



WS-275-B



WS-285-B



WS-312-B



WS-318-B



WS-320-B



WS-327-B



WS-340-B



WS-360-B



WS-362-B



WS-364-B



WS-365-B



WS-368-B

Part No.	Description	Thread Size	Hardware Type	Knurl	Length	Grade	Box Qty.
WS-004-B	Wheel Stud	M14-1.50	Serrated	16mm	59.77mm	8	3
WS-109-B	Wheel Stud	1/2"-20	Serrated	0.625in	1-5/8in	8	3
WS-138-B	Wheel Stud	1/2"-20	Serrated	0.535in	1-17/32in	8	3
WS-159-B	Wheel Stud	1/2"-20	Serrated	0.620in	1-5/8in	8	5
WS-219-B	Wheel Stud	1/2"-20	Serrated	0.625in	2in	8	3
WS-244-B	Wheel Stud	M12-1.50	Serrated	14.22mm	37mm	10.9	5
WS-254-B	Wheel Stud	M12-1.50	Serrated	12.73mm	41.5mm	10.9	5
WS-266-B	Wheel Stud	M12-1.50	Serrated	14.20mm	40mm	10.9	5
WS-269-B	Wheel Stud	M12-1.50	Serrated	12.22mm	36mm	10.9	5
WS-275-B	Wheel Stud	M12-1.50	Serrated	14.30mm	41.5mm	10.9	3
WS-285-B	Wheel Stud	M12-1.50	Serrated w/ Clip Head	14.94mm	41mm	10.9	5
WS-312-B	Wheel Stud	M12-1.50	Serrated	14.17mm	44.5mm	10.9	3
WS-318-B	Wheel Stud	M14-1.50	Serrated	17mm	26mm	8	5
WS-320-B	Wheel Stud	M12-1.25	Serrated	12.83mm	41.5mm	10.9	3
WS-327-B	Wheel Stud	M14-1.50	Serrated	16mm	45.5mm	10.9	3
WS-340-B	Wheel Stud	M12-1.50	Serrated	12.929mm	42mm	10.9	3
WS-360-B	Wheel Stud	M12-1.50	Serrated	12.37mm	42mm	10.9	3
WS-362-B	Wheel Stud	M12-1.50	Serrated	12.30mm	34mm	10.9	3
WS-364-B	Wheel Stud	1/2"-20	Serrated	0.618in	1-15/32in	8	3
WS-365-B	Wheel Stud	M12-1.50	Serrated	13.41mm	51.5mm	10.9	3
WS-368-B	Wheel Stud	1/2"-20	Serrated	0.627in	1-31/32in	8	3

WHEEL HARDWARE

WHEEL STUDS



WS-369-B



WS-378-B



WS-404-B



WS-410-B



WS-414-B



WS-428-B



WS-434-B



WS-442-B



WS-462-B



WS-507-B



WS-542-B



WS-547-B



WS-566-B



WS-568-B

Part No.	Description	Thread Size	Hardware Type	Knurl	Length	Grade	Box Qty.
WS-369-B	Wheel Stud	M12-1.50	Serrated	14.99mm	46mm	10.9	3
WS-378-B	Wheel Stud	M12-1.25	Serrated	14.35mm	42mm	10.9	3
WS-404-B	Wheel Stud	M12-1.25	Serrated	14.28mm	46mm	10.9	3
WS-410-B	Wheel Stud	M12-1.50	Serrated	12.90mm	46mm	10.9	3
WS-414-B	Wheel Stud	M12-1.50	Serrated	14.38mm	45mm	10.9	3
WS-428-B	Wheel Stud	M14-1.50	Serrated	15.70mm	65.4mm	10.9	3
WS-434-B	Wheel Stud	M14-1.50	Serrated	16.01mm	57.93mm	10.9	3
WS-442-B	Wheel Stud	M14-2.0	Serrated	15.5mm	57.93mm	10.9	3
WS-462-B	Wheel Stud	M12-1.50	Serrated	14.20mm	44.10mm	10.9	3
WS-507-B	Wheel Stud	M12-1.50	Serrated	13mm	44.8mm	10.9	3
WS-542-B	Wheel Stud	M14-2.0	Serrated	15.97mm	61.5mm	10.9	3
WS-547-B	Wheel Stud	M12-1.50	Serrated	14.42mm	47.2mm	10.9	3
WS-566-B	Wheel Stud	M12-1.25	Serrated	14.38mm	43.5mm	10.9	3
WS-568-B	Wheel Stud	M12-1.50	Serrated	12.97mm	42.5mm	10.9	3

WHEEL HARDWARE

DYNAMIC – WHEEL HARDWARE ASSORTMENTS

Dynamic wheel hardware assortments contain the most popular wheel studs or lug nuts for passenger car and light truck applications. These assortments are designed for the installer and provide the best coverage for a small investment.

Each assortment comes in a durable plastic case that keeps all of the fittings organized and easy to find. The detailed lid insert identifies each fitting with a graphic reference and size. Reorder part numbers, quantities and UPC codes are also shown.

Available Assortments:

See Automotive Service Parts Assortment Catalog for specific part numbers and quantities



Wheel Stud Assortment No. DY-WS-1

Most popular wheel studs.

- 12 part numbers
- 60 total pieces



Lug Nut Assortments No. DY-WN-12

The most popular lug nuts come in two separate cases. For the complete assortment order both DY-WN-12 and DY-WN-12B.

- 12 part numbers
- 60 total pieces



Lug Nut Assortments No. DY-WN-12B

- 12 part numbers
- 60 total pieces

SPECIALTY WHEEL BOLTS

Hub and Bearing Mounting Bolts No. WB-127-B

5 Wheel Hub Bolts & 1 O-Ring. Bolts are constructed from high quality steel to secure your hub assembly to the wheel. For a complete and convenient repair, all necessary hardware is included.

- Rust resistant
- Direct replacement for a proper fit every time
- Easy to install
- Manufactured from high-quality materials for durability
- 2015-2018 Ford Transit



No. WB-127-B

Pkg of 5

Wheel Hub Bolts & 1 O-Ring