

# TPMS SENSORS,

SERVICE KITS &  
ACCESSORIES



# TPMS SENSORS, SERVICE KITS

## CONTENTS

### BOXED SERVICE PARTS

<b>TPMS DVT-PRO SENSOR</b>	7
<b>TPMS DIAGNOSTIC TOOL</b>	
Diagnostic Tool with Internal OBDII	8
<b>TPMS SERVICE KITS</b>	9-10
<b>TPMS REPLACEMENT VALVES</b>	10-12
<b>RETRO KIT BLE SENSORS &amp; READER</b>	12
<b>TPMS ASSORTMENTS</b>	
Valve Maintenance Kit Assortment	13
Valve Stem Assortment1	13
Valve Stem Assortment	13
<b>TPMS STORAGE CABINETS</b>	
Storage Cabinet - Plastic 24 Drawer	13
Sensor/Service Kit/Tool Storage Cabinet	13
<b>TPMS SPECIALTY VALVES</b>	15
<b>TPMS ACCESSORIES</b>	16
<b>TIRE VALVES</b>	17
<b>TPMS SERVICE TOOLS</b>	18

# TPMS SENSORS

## DYNAMIC DVT-PRO SENSOR WITH DUAL VALVE TECHNOLOGY

One (1) DVT-PRO sensor is designed to be programmed with several TPMS Tools including ATEQ, Snap-on, and Dynamic DY46 & DY-47. Dynamic DVT-PRO sensor comes with our 6-207A rubber valve and has “Dual Valve Technology” (DVT). The valve stems can easily be replaced with other Dynamic valve options (see below) using the same sensor housing.

### No. DVT-PRO

- **Single Sensor Program** - easy to manage and lower inventory investment
- **Industry Leading Vehicle Coverage** - Domestic, European, and Asian vehicles including wireless auto-locate and hi-line protocols
- **Fast Wireless Programming** - no pad or cradles needed to program the sensors
- **Copy/Clone Capability** - copy ID from the old sensor and program the new sensor with the same ID number
- **Through the Tire Programming** - eliminates the need to breakdown tire and wheel to reprogram
- **Future Software Updates** - new vehicle protocols can be added with a simple tool software update
- **Dual Valve Technology** - easy to interchange between rubber or metal valve options
- **Online Data** - Lookup application data available on Epicor, WHI, Wrench Head, ShowMeTheParts & MAM



# TPMS DIAGNOSTIC TOOL

## DY-47 DIAGNOSTIC TOOL WITH INTERNAL OBDII

The new DY-47 tool supersedes the former DY-46 in a more comfortable compact size and a more affordable price point. The DY-47 has all the same functionality as the DY-46, just more compact and includes a NEW built-in OBDII quick connect port.



**FREE  
FIVE-YEAR  
UPDATES**

- Displays all sensor data in seconds, including the TPMS sensor ID, tire pressure, tire temperature, and battery status.
- Activates, diagnoses and reads 100% of OE and aftermarket TPMS sensors.
- Industry leading coverage for all vehicles globally, including Domestic, Asian and European.
- Includes built-in OBD port and quick connector for easy OBD transferring.
- Provides TPMS sensor part number
- Checks Remote Keyless Entry signal
- User friendly navigation and command buttons
- Frequent database updates via PC desktop software
- Interface in 23 languages
- Five-year **FREE** software updates

### \*DY-47S w/WiFi

Includes	Qty.
OBDII	1
Charger	1
USB Interface	1
Hard Case	1



**NEW** 1-Piece OBD and Cable  
No. **DY-OBD47C**

# TPMS SERVICE KITS

## TPMS SERVICE KITS



The OEM requires that the valve stem components are replaced every time the tire is serviced on vehicles with TPMS.



### Clamp-In Kit Components

### Replacement Reason

### Result

(A) Valve Core	Nickel plating strips leading to galvanic corrosion & seized valve cores	Leak at valve core, potential broken valve stem
(B) Valve Cap w/seal	Valve cap seal wear	Allows moisture into core
(C) Hex Nut	Plating worn off, treads corrode	Leak path at valve stem
(D) Grommet/ seal	Crack, deteriorate and leak over	leak path at valve stem
(E) Metal washer (some applications)	Washer conforms to rim during installation	Leak path at valve stem
<b>Clamp-In Kit Components</b>		
(F) Rubber TPMS snap-in valve	Crack, deteriorate and leak over time	Leak path at valve stem

Refer to manufacturer's specifications for proper torque requirements when replacing hex nuts and valve cores. These specifications can be found in the Dynamic TPMS Service Kit Application Guide.

### 6-102

Buick, Cadillac, Chevrolet, GMC, Hummer, Isuzu, Pontiac, Ram, Saab, Saturn

Cross-reference:  
20004, 20006, 1070K, 92-0125



### 6-103

Cadillac, Chevrolet, Chrysler, Dodge, Infiniti, Isuzu, Jeep, Mitsubishi, Nissan, Subaru

Cross-reference:  
20003, 1080K, 92-0140



### 6-106

Ford, Lincoln, Mercury

Cross-reference:  
20002, 1060K, 92-0115



### 6-108

Buick, Cadillac, Chevy, Chrysler, Dodge, GMC, Hyundai, Jaguar, Jeep

Cross-reference:  
20030, 1050K, 92-0150



### 6-109

Acura, Honda, Hyundai, Kia

Cross-reference:  
20021, 2000K, 92-0246



### 6-110

Audi, BMW, Mercedes, Mini, Porsche, Volkswagen

Cross-reference:  
20023, 1090K, 92-0261



### 6-111

Acura, Honda, Kia, Lexus, Pontiac, Scion, Subaru, Toyota

Cross-reference:  
20032, 1100K, 92-0215



### 6-112

Infiniti, Mitsubishi, Nissan

Cross-reference:  
20010, 1130K, 92-0130



### 6-115

Audi, VW

Cross-reference:  
20017, 1030K, 92-0235



### 6-116

Honda, Infiniti, Lexus, Nissan, Toyota

Cross-reference:  
20031, 1110K, 92-0135



### 6-117

Lexus

Cross-reference:  
20033, 1120K, 92-0155



### 6-120

Chevrolet, Chrysler, Dodge, Infiniti, Jeep, Mitsubishi, Nissan, Ram, Suzuki, Toyota

Cross-reference:  
20016, 2030K, 92-202



# TPMS SERVICE KITS & REPLACEMENT VALVES

## TPMS SERVICE KITS

<b>6-122</b> Saab, Saturn, Suzuki, Volvo  Cross-reference: 20009, 2010K, 92-0195 	<b>6-125</b> Cadillac, Chevrolet, GMC  Cross-reference: 20015, 2020K 	<b>6-127</b> Acura, Honda, Hyundai, Kia, Toyota  Cross-reference: 20019, 2040K, 92-0244 
<b>6-129</b> Audi, VW  Cross-reference: 20017, 1031K 	<b>6-138</b> Acura, Dodge, Honda, Hyundai, Infiniti, Jeep, Kia, Mazda, Mini, Mitsubishi, Nissan, Suzuki, Volkswagen, Volvo Cross-reference: 20032, 7020K, 92-3312 	<b>6-139</b> Acura, Chrysler, Dodge, Jeep, Nissan  Cross-reference: 20013, 7000K, 92-3311 
<b>6-207A</b> Buick, Cadillac, Chevrolet, Chrysler, Dodge, Ford GMC, Hyundai, Jeep, Kia, Lincoln, Mazda, Mercury, Mitsubishi, Pontiac, Saab, Suzuki, VW, Volvo Cross-reference: 20008, 20018, VS950, 92-0145 		

## TPMS REPLACEMENT VALVES

<b>6-201</b> Audi, Chevrolet, Chrysler, GMC, Hyundai, Mazda, Mitsubishi, Pontiac, Suzuki, Volkswagen, Volvo Cross-reference: N/A 	<b>6-203</b> Chrome Valve for Ford Shelby Cobra Optional replacement for 6-207A & DVT-PRO Sensor Cross-reference: VS925C 	<b>6-204</b> Honda (Long Valve)  Cross-reference: 20035, 1097K 
<b>6-205</b> Acura, Honda, Hyundai, Kia (Short Valve)  Cross-reference: 20036, 1096K 	<b>6-206B</b> Mercedes  Cross-reference: 20023, 1040K, 92-1170 	<b>6-207A</b> Buick, Cadillac, Chevrolet, Chrysler, Dodge, Ford GMC, Hyundai, Jeep, Kia, Lincoln, Mazda, Mercury, Mitsubishi, Pontiac, Saab, Suzuki, VW, Volvo Cross-reference: 20008, 20018, VS950, 92-0145 
<b>6-208</b> Cadillac, Chrysler, Dodge, Infiniti, Jeep, Mitsubishi, Nissan Cross-reference: VS90 	<b>6-209</b> Hyundai  Cross-reference: VS1010 	<b>6-210</b> Kia, Volvo  Cross-reference: 20046 

# TPMS REPLACEMENT VALVES

## TPMS REPLACEMENT VALVES

<b>6-211</b> Jeep, Ram  Cross-reference: VS65	<b>6-213</b> Acura, Buick, Cadillac, Chevrolet, Ford, GMC, Honda, Hyundai, Kia, Lincoln, Mazda, Nissan, Toyota Cross-reference: VS20 	<b>6-218</b> Dodge Sprinter  Cross-reference: 20036, 1098K, 92-1170
<b>6-220</b> Audi 4, BMW, Porsche Gen I (Silver - 43 mm) Cross-reference: 1092, RDV001 	<b>6-221</b> BMW Gen I (Green - 48 mm) Cross-reference: 1093, RDV002 	<b>6-222</b> BMW, Mercedes Gen I (Black - 49 mm) Cross-reference: 1094, RDV003 
<b>6-223</b> BMW, Mercedes Gen I (Orange - 51 mm) Cross-reference: 1095, RDV004 	<b>6-225/6-225B</b> Aluminum Optional Replacement Valve for 6-207A & DVT-PRO Sensor Cross-reference: VS925A, 34000 	<b>6-228S</b> BMW, Chevrolet, Chrysler, Dodge, Jeep, Mercedes, Mitsubishi, Ram, Toyota Cross-reference: 9066K 
<b>6-231C</b> Adjustable Valve for Acura, Chrysler, Dodge, Honda, Hyundai, Infiniti, Jeep, Kia, Mazda, Mini, Mitsubishi, Nissan, Suzuki, VW, Volvo Cross-reference: VS70 	<b>6-235</b> Alfa Romeo, Aston Martin, Cadillac, Chevrolet, Infiniti Cross-reference: VS40 	<b>6-236</b> Hyundai, Kia Cross-reference: VS965 
<b>6-240</b> Audi, BMW, Mercedes, VW Gen II (Silver - 43mm) Cross-reference: RDV021 	<b>6-241</b> BMW Gen II (Green - 48mm) Cross-reference: RDV022 	<b>6-242</b> Audi, BMW, Porsche, VW Gen II (Black - 49mm) Cross-reference: RDV023 
<b>6-243</b> BMW Gen II (Orange - 51mm) Cross-reference: RDV024 	<b>6-244</b> Rubber Snap-In Valve Ford, Lincoln, Subaru Cross-reference: VS20 	<b>6-245</b> Metal Clamp-In High-Pressure Valve Ford, Lincoln Cross-reference: VS240MC 
<b>6-270</b> Toyota  Cross-reference: VS312	<b>6-284</b> Brushed Metal BLE Valve - Tesla Cross-reference: VS90 	<b>6-284B / 6-284G</b> Black Metal & Graphite Metal BLE Valve -Tesla Cross-reference: VS90 

# TPMS REPLACEMENT VALVES & RETRO KITS

## TPMS REPLACEMENT VALVES

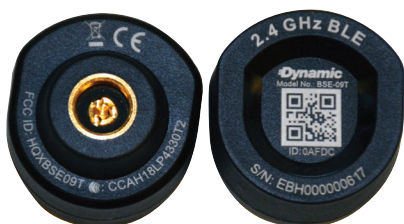
<b>6-503</b> Nissan  Cross-reference: VS30		<b>6-507</b> Toyota  Cross-reference: VS15		<b>6-543C</b> Ram Dually w/OE Alloy Wheels  Cross-reference: VS35	
--	---	--	---	---	---

## RETRO FIT TPMS SENSORS

Your TPMS (Tire Pressure Monitoring System) is your vehicle reports real-time tire pressure and tire temperature and warns you when one or more tires are significantly under-inflated to avoid unsafe driving conditions, poor fuel economy, and tire wear.

However, there are many instances where TPMS does NOT come standard including trailers, ATV's, motorcycles and more. That's where Dynamic Bluetooth Low Energy (BLE) TPMS Retro Kit sensors can help!

### External Retro Kit Sensors No. DY-BLE-E



NOTE: Not intended to submerge in water

- For Metal Valves Only
- Range - 20' (6.096 meters)
- Screws on the valve like a cap
- Swap from one wheel/vehicle to another
- For trucks and bus level tires which can handle up to 185 psi

### Internal Retro Kit Sensors No. DY-BLE-I



NOTE: Waterproof (for submergence in water)

- Range - 20' (6.096 meters)
- Mounts to the inside the tire
- Comes with Rubber Snap-In Valve (6-207A)
- Optional Metal Valves: Aluminum (6-225), Chrome (6-203), Black Aluminum (6-225B)

### TPMS Reader No. DY-BLE-R



- Easily install the Repeater with two wires near the back of the hauling vehicle
- No pairing needed
- Extends the signal of sensor up to 16'4" (5 meters)

# TPMS ASSORTMENTS

## TPMS SERVICE KIT & REPLACEMENT VALVES ASSORTMENTS

**Dynamic Service Kit & Replacement Valve Assortments contain all of the popular fittings required for TPMS tire servicing. For both domestic and import cars and light trucks.**

Each assortment comes in a durable plastic case that keeps all of the fittings organized and easy to find. The detailed lid insert identifies each fitting with a graphic reference and size. Reorder part numbers, quantities and UPC codes are also shown.

### Available Assortments:

See Automotive Service Parts Assortment Catalog for specific part numbers and quantities



#### Valve Maintenance Kit Assortment No. DY-TPMS-16

OE Replacement Valve Maintenance Kit most popular TPMS service kits for most domestic and imported cars and light trucks.

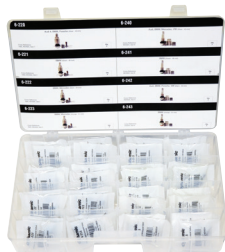
- 17 part numbers
- 350 total pieces
- Case measures: 15-3/4"W x 3-1/4"H x 9"D



#### Valve Stem Assortment – No. DY-TPMS-16VSR

Assortment of popular TPMS replacement valve stems.

- 16 part numbers
- 52 total pieces
- Case measures: 15-3/4"W x 3-1/4"H x 9"D



#### Valve Stem Assortment No. DY-TPMS-VSEURO

Assortment includes replacement of corroded or broken OE TPMS valve stem.

- 8 part numbers
- 32 total pieces
- Case measures: 15-3/4"W x 3-1/4"H x 9"D

# TPMS STORAGE CABINETS

## Storage Cabinet - Plastic 24 Drawers No. CAB-24P



- Sturdy plastic cabinet holds 24 translucent plastic drawers
- Drawers are easy to pull out
- Holds up to 16 TPMS Service Kit packs per drawer
- Holds up to 12 TPMS Replacement Valve packs per drawer
- Cabinet measures: 20"W x 16"H x 6-1/2" D
- Drawer measures: 4-1/2"W x 2-1/2"H x 5-1/2"D

## Sensor/Service Kit/Tool Storage Cabinet No. TPMS-72

All of the necessary parts and tools can be securely stored in one place with this deluxe TPMS-72 cabinet. It will hold up to 72 DVT-Sensors and 28 different boxes of service kits and accessories. A pull-out drawer is designed to hold essential TPMS service tools. There is also a slot for an application catalog.



- Pre-drilled holes for wall mounting
- Measures 30"H x 20"W x 9"D
- Weight 54 lbs.

(DVT-Sensors and tools sold separately)



# TPMS SPECIALTY VALVES & ADAPTERS

## TPMS SPECIALTY VALVES

**Valve Stem Short Metal -  
With Sensor Loop**

**No. TPMS-501**

- Includes 2 rubber washers that fit valve hole size 0.452 & 0.61
- PSI Rating: 120



**Valve Stem Short Metal 90°  
- with Schrader Loop**

**No. TPMS-104**

- Length: 2.856
- Height: 0.664
- PSI Rating: 120



**OEM Valve Short Stem -  
Schrader Style**

**No. TPMS-102**

- Height: 1.105
- PSI Rating: 120



**OEM Valve Short Stem Rubber -  
Schrader Style**

**No. TPMS-108**

- Height: 0.960
- PSI Rating: 80



**Valve Stem Shorty Metal**

**No. TR559-50**

- Included 2 rubber washers that fit valve hole size 0.452 & 0.61
- PSI Rating: 120



**Valve Stem Replacement  
for Ram Dually**

**No. 6-543C**

- 45° Bend
- Rim Hole: 9.7 mm



**OEM Huf Replacement  
Valve - 43mm Silver**

**No. RDV021**



**OEM Huf Replacement  
Valve - 43mm Black**

**No. RDV026**



**OEM Huf Replacement Valve -  
43mm Titanium Gray**

**No. RDV027**



# TIRE ACCESSORIES

## TIRE ACCESSORIES

### Adjustable Pressure Placard Stickers

ADJUSTED PLACARD (COLD INFLATION TIRE PRESSURE VALUES)		
TIRE SIZE	LOAD	Cold Inflation Pressure (PSI)
FRONT		
BACK		
VEHICLE CAPACITY WEIGHT ON TIRE SAFETY PLACARD "Place this NEW Placard near the OE SAFETY PLACARD" DY-APS20		

DY-APS20

### Tire & Air Gauges

DY-1889

Tread Gauge



DY-1900

Air Gauge High-Pressure



DY-1901

Air Gauge Low-Pressure



DY-1903

Dual Angle Gauge



DY-1904

Dual Foot Gauge



### Caps, Cores & Adapters

DY-128B

Valve Cap -  
Nylon (Black)

Box of 100



DY-128G

Valve Cap -  
Nylon (Grey)

Box of 100



DY-158

Black Valve Cap  
for Shrader 20008

Box of 50



DY-1400

TPMS Nickel-Plated  
Valve Core

Box of 100



TPMS-501

Low Profile TPMS  
Valve Stem Adapter

Box of 10



# TIRE VALVES

## TIRE VALVES

### Tubeless Snap-In Valves

#### Made with EDPM Rubber

65 psi maximum cold inflation pressure – maximum rim thickness .156"



Part No.	Height	Valve Hole	Qty.
TR413-50	.125"	.453"	50
TR413-500	.125"	.453"	500
TR414-50	.125"	.453"	50
TR414-500	.125"	.453"	500
TR418-50	.125"	.453"	50
TR418-500	.125"	.453"	500
TR423-50	.125"	.453"	50

### Tubeless Snap-In Valves Chrome Sleeve & Cap

#### Made with EDPM Rubber

65 psi maximum cold inflation pressure – maximum rim thickness .156"



Part No.	Height	Valve Hole	Qty.
TR413C-50	.125"	.453"	50
TR413C-500	.125"	.453"	500
TR418C-50	.125"	.453"	50
TR418C-500	.125"	.453"	500

### High-Pressure Snap-In Valves

#### Brass/Rubber

80 psi maximum cold inflation pressure – maximum rim thickness .205"



Part No.	Height	Valve Hole	Qty.
TR600HP-50	.127"	.453"	50

### Bolt-In Valves Flush Mount Nickel/Chrome Plated Brass

Torque at 25-45 in-lbs.



Part No.	Height	Valve Hole	Qty.
TR416-50	1.44"	.453"/.625"	50
TR559-50	1.00"	.453"/.625"	50

### Truck Tire Valves

#### Straight

For steel wheels with .625" valve hole



Part No.	Height	Valve Hole	Qty.
TR500T-10	2"	.625"	10
TR501T-10	1.5"	.625"	10
TR572T-10	3.75"	.625"	10
TR573-10	4.375"	.625"	10

### 60° Bend



Part No.	Height	Valve Hole	Qty.
TR545D	.98"/2.6"	.625"	10
TR554D	.78"/2.13"	.625"	10
TR555D	.78"/2.75"	.625"	10
TR543D	.98"/1.38"	.625"	10
TR544D	.98"/1.94"	.625"	10

### 13°, 23° & 31° Bend



Part No.	Height	Valve Hole	Qty.
TR571E13-10	3.375"	.625"	10
TR500A-10	.98"/1.94"	.625"	10
TR57F-10	3.75"	.625"	10

# TPMS SERVICE TOOLS

## TPMS SERVICE TOOLS

Service procedures for replacing TPMS sensors and installing TPMS service kits require the proper tools. Dynamic has the essential tools needed for servicing TPMS vehicles.

**Valve Stem Puller**  
**No. DY-160**



**TPMS T6 Screwdriver**  
**No. DY-180**



**4-Way Valve Tool**  
**No. DY-1890**



**TPMS 4-Way Valve Tool**  
**No. DY-32VNT**



This tool is used for removing sensor nuts and seating the sensor grommets. It can be used to remove 11 mm and 12 mm nuts

## TPMS Service Tools

**Complete TPMS Service Tool Kit**  
**No. DY-312**

The DY-312 contains all of the tools needed to service and install TPMS sensors and service kits. All tools are stored and organized in a sturdy plastic case.

Kit No.	Description
DY-001A	Torque Wrench with 11mm & 12mm socket
DY-002A	Torque Tool for Valve & Sensor
DY-150	Valve Core Torque Tool 12 in-lbs. (.45N·m)
DY-164	Grommet Removal Tool
DY-172	Grommet Pick Tool



**Torque Wrench with Sockets**  
**No. DY-001A**



Torque wrench is used for installing TPMS sensor nuts. Torque range is from 30 in-lbs (3.4 N·m) to 120 in-lbs (13.6 N·m). Includes 11 mm and 12 mm sockets. Comes in a plastic storage case.

**Torque Tool for Valve & Sensor** **No. DY-002A**



Torque tool is used for installing valves on DVT-sensors. Comes with T10 Torx bit for the clamp-in valve and a S7 socket for the snap-in valve. 12 in-lbs (1.4 N·m)

**Valve Core Torque Tool**  
**No. DY-150**



Tightens valve cores to OE specifications, 3.5-4 in-lbs (.45 N·m). Meets industry recommended torque values. Can also be used to remove valve cores.

**Grommet Removal Tool**  
**No. DY-164**



This tool is used to remove the old grommet from the TPMS aluminum valve stem.

**Grommet Pick Tool**  
**No. DY-172**



This tool is used to help remove old and broken grommets from the TPMS aluminum valve stem.