

TPMS SENSORS,

SERVICE KITS &
ACCESSORIES



TPMS SENSORS, SERVICE KITS

BOXED SERVICE PARTS

CONTENTS

TPMS DVT-PRO SENSOR	
.....	7

TPMS DIAGNOSTIC TOOL	
Diagnostic Tool with Internal OBDII	8

TPMS STARTER KITS	
.....	9

TPMS SERVICE KITS	
.....	10-11

TPMS REPLACEMENT VALVES	
.....	11-13

RETRO KIT BLE SENSORS & READER	
.....	13

TPMS ASSORTMENTS	
Valve Maintenance Kit Assortment	14
Valve Stem Assortment1	14
Valve Stem Assortment	14

TPMS STORAGE CABINETS	
Storage Cabinet - Plastic 24 Drawer	15
Sensor/Service Kit/Tool Storage Cabinet	15

TPMS SPECIALTY VALVES	
.....	16

TPMS ACCESSORIES	
.....	16

TIRE VALVES	
.....	17

TPMS SERVICE TOOLS	
.....	18

TPMS SENSORS

DYNAMIC DVT-PRO SENSOR WITH DUAL VALVE TECHNOLOGY

One (1) DVT-PRO sensor is designed to be programmed with several TPMS Tools including ATEQ, Snap-on, and Dynamic DY46 & DY-47. Dynamic DVT-PRO sensor comes with our 6-207A rubber valve and has “Dual Valve Technology” (DVT). The valve stems can easily be replaced with other Dynamic valve options (see below) using the same sensor housing.

Item No.	Description	Qty.
DVT-PRO	Dynamic DVT-PRO Sensor 315/433MHz	1 ea.
DVT-PRO12	Dynamic DVT-PRO Sensor 315/433MHz	12/Box
DVT-PRO96	Dynamic DVT-PRO Sensor 315/433MHz	96/Box

DYNAMIC DVT-PRO
315/433 MHz



No. DVT-PRO

- **Single Sensor Program** - easy to manage and lower inventory investment
- **Industry Leading Vehicle Coverage** - Domestic, European, and Asian vehicles including wireless auto-locate and hi-line protocols
- **Fast Wireless Programming** - no pad or cradles needed to program the sensors
- **Copy/Clone Capability** - copy ID from the old sensor and program the new sensor with the same ID number
- **Through the Tire Programming** - eliminates the need to breakdown tire and wheel to reprogram
- **Future Software Updates** - new vehicle protocols can be added with a simple tool software update
- **Dual Valve Technology** - easy to interchange between rubber or metal valve options
- **Online Data** - Lookup application data available on Epicor, WHI, Wrench Head, ShowMeTheParts & MAM

Dynamic Dual Valve Replacement

6-207A



Rubber Valve
T10 screw
Box of 15

6-225



Brushed Metal Valve
T10 screw
Box of 4

6-203



Chrome Metal Valve
T10 screw
Box of 4

6-225B



Black Metal Valve
T10 screw
Box of 4

TPMS DIAGNOSTIC TOOL

DY-47 DIAGNOSTIC TOOL WITH INTERNAL OBDII

The new DY-47 tool supersedes the former DY-46 in a more comfortable compact size and a more affordable price point. The DY-47 has all the same functionality as the DY-46, just more compact and includes a NEW built-in OBDII quick connect port.



**FREE
FIVE-YEAR
UPDATES**

- Displays all sensor data in seconds, including the TPMS sensor ID, tire pressure, tire temperature, and battery status.
- Activates, diagnoses and reads 100% of OE and aftermarket TPMS sensors.
- Industry leading coverage for all vehicles globally, including Domestic, Asian and European.
- Includes built-in OBD port and quick connector for easy OBD transferring.
- Provides TPMS sensor part number
- Checks Remote Keyless Entry signal
- User friendly navigation and command buttons
- Frequent database updates via PC desktop software
- Interface in 23 languages
- Five-year **FREE** software updates

***DY-47S w/WiFi**

Includes	Qty.
OBDII	1
Charger	1
USB Interface	1
Hard Case	1



NEW 1-Piece OBD and Cable
No. DY-OBD47C

TPMS STARTER KITS

DVT-12PROWT Dynamic DVT-PRO Sensor & Tool Assortment

DVT-PRO Single Dual Banded Sensor and Tool Assortment contains 12 Dynamic DVT-PRO Sensors and a DY-47 Diagnostic Tool with OBDII Tool capabilities including a hard case.



Includes	Description	Qty.
DVT-PRO	Dynamic DVT-PRO Sensor - 315/433MHz	12
6-225	DVT-PRO Aluminum Replacement Valve	4
DY-47	Diagnostic Scan Tool, Black Plastic Case, Charger and USB Interface	1

DY-TPMS-1 DVT-PRO Starter Kit Assortment

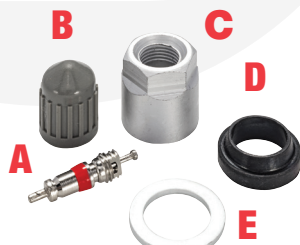
The DY-TPMS-1 Starter Kit is a group of our top selling valves, kits, sensors and tools. The kit contains 8 DVT-PRO single dual banded sensors, the top selling DVT & OEM replacement rubber valve, the 6-207A and the 3 metal options for that same fitment. The kit also includes our top selling 6-111 OEM maintenance service kit, valve cores and caps as well as the necessary torque tools for the valve cores and sensors. This starter kit is sure to add value to any shop that offers TPMS service!



Kit No.	General Application	Qty.
DT-PRO	Dynamic DVT-PRO Sensor - 315/433 MHz	8
6-207A	Rubber Replacement Valve	15
6-203	Chrome Metal Replacement Valve	4
6-225	Aluminum Replacement Valve	4
6-225B	Black Metal Replacement Valve	4
6-111	Service Kit for Toyota, Lexus, Scion	16
DY-1400	TPMS Nickel-Plated Valve Core	100
DY-158	Black Valve Cap for Shrader 20008	50
DY-150	Valve Core Torque Tool	1
DY-002A	Torque Tool for Valve & Sensor	1

TPMS SERVICE KITS

TPMS SERVICE KITS



The OEM requires that the valve stem components are replaced every time the tire is serviced on vehicles with TPMS.



Clamp-In Kit Components

Replacement Reason

Result

(A) Valve Core	Nickel plating strips leading to galvanic corrosion & seized valve cores	Leak at valve core, potential broken valve stem
(B) Valve Cap w/seal	Valve cap seal wear	Allows moisture into core
(C) Hex Nut	Plating worn off, treads corrode	Leak path at valve stem
(D) Grommet/ seal	Crack, deteriorate and leak over	leak path at valve stem
(E) Metal washer (some applications)	Washer conforms to rim during installation	Leak path at valve stem
Clamp-In Kit Components		
(F) Rubber TPMS snap-in valve	Crack, deteriorate and leak over time	Leak path at valve stem

Refer to manufacturer's specifications for proper torque requirements when replacing hex nuts and valve cores. These specifications can be found in the Dynamic TPMS Service Kit Application Guide.

6-102

Buick, Cadillac, Chevrolet, GMC, Hummer, Isuzu, Pontiac, Ram, Saab, Saturn

Cross-reference:
20004, 20006, 1070K, 92-0125



6-103

Cadillac, Chevrolet, Chrysler, Dodge, Infiniti, Isuzu, Jeep, Mitsubishi, Nissan, Subaru

Cross-reference:
20003, 1080K, 92-0140



6-106

Ford, Lincoln, Mercury

Cross-reference:
20002, 1060K, 92-0115



6-108

Buick, Cadillac, Chevy, Chrysler, Dodge, GMC, Hyundai, Jaguar, Jeep

Cross-reference:
20030, 1050K, 92-0150



6-109

Acura, Honda, Hyundai, Kia

Cross-reference:
20021, 2000K, 92-0246



6-110

Audi, BMW, Mercedes, Mini, Porsche, Volkswagen

Cross-reference:
20023, 1090K, 92-0261



6-111

Acura, Honda, Kia, Lexus, Pontiac, Scion, Subaru, Toyota

Cross-reference:
20032, 1100K, 92-0215



6-112

Infiniti, Mitsubishi, Nissan

Cross-reference:
20010, 1130K, 92-0130



6-115

Audi, VW

Cross-reference:
20017, 1030K, 92-0235



6-116

Honda, Infiniti, Lexus, Nissan, Toyota

Cross-reference:
20031, 1110K, 92-0135



6-117

Lexus

Cross-reference:
20033, 1120K, 92-0155



6-120

Chevrolet, Chrysler, Dodge, Infiniti, Jeep, Mitsubishi, Nissan, Ram, Suzuki, Toyota

Cross-reference:
20016, 2030K, 92-202



TPMS SERVICE KITS & REPLACEMENT VALVES

TPMS SERVICE KITS

6-122 Saab, Saturn, Suzuki, Volvo Cross-reference: 20009, 2010K, 92-0195 	6-125 Cadillac, Chevrolet, GMC Cross-reference: 20015, 2020K 	6-127 Acura, Honda, Hyundai, Kia, Toyota Cross-reference: 20019, 2040K, 92-0244 
6-129 Audi, VW Cross-reference: 20017, 1031K 	6-138 Acura, Dodge, Honda, Hyundai, Infiniti, Jeep, Kia, Mazda, Mini, Mitsubishi, Nissan, Suzuki, Volkswagen, Volvo Cross-reference: 20032, 7020K, 92-3312 	6-139 Acura, Chrysler, Dodge, Jeep, Nissan Cross-reference: 20013, 7000K, 92-3311 
6-207A Buick, Cadillac, Chevrolet, Chrysler, Dodge, Ford GMC, Hyundai, Jeep, Kia, Lincoln, Mazda, Mercury, Mitsubishi, Pontiac, Saab, Suzuki, VW, Volvo Cross-reference: 20008, 20018, VS950, 92-0145 		

TPMS REPLACEMENT VALVES

6-201 Audi, Chevrolet, Chrysler, GMC, Hyundai, Mazda, Mitsubishi, Pontiac, Suzuki, Volkswagen, Volvo Cross-reference: N/A 	6-203 Chrome Valve for Ford Shelby Cobra Optional replacement for 6-207A & DVT-PRO Sensor Cross-reference: VS925C 	6-204 Honda (Long Valve) Cross-reference: 20035, 1097K 
6-205 Acura, Honda, Hyundai, Kia (Short Valve) Cross-reference: 20036, 1096K 	6-206B Mercedes Cross-reference: 20023, 1040K, 92-1170 	6-207A Buick, Cadillac, Chevrolet, Chrysler, Dodge, Ford GMC, Hyundai, Jeep, Kia, Lincoln, Mazda, Mercury, Mitsubishi, Pontiac, Saab, Suzuki, VW, Volvo Cross-reference: 20008, 20018, VS950, 92-0145 
6-208 Cadillac, Chrysler, Dodge, Infiniti, Jeep, Mitsubishi, Nissan Cross-reference: VS90 	6-209 Hyundai Cross-reference: VS1010 	6-210 Kia, Volvo Cross-reference: 20046 

TPMS REPLACEMENT VALVES

TPMS REPLACEMENT VALVES

6-211 Jeep, Ram  Cross-reference: VS65	6-213 Acura, Buick, Cadillac, Chevrolet, Ford, GMC, Honda, Hyundai, Kia, Lincoln, Mazda, Nissan, Toyota Cross-reference: VS20 	6-218 Dodge Sprinter  Cross-reference: 20036, 1098K, 92-1170
6-220 Audi 4, BMW, Porsche Gen I (Silver - 43 mm) Cross-reference: 1092, RDV001 	6-221 BMW Gen I (Green - 48 mm) Cross-reference: 1093, RDV002 	6-222 BMW, Mercedes Gen I (Black - 49 mm) Cross-reference: 1094, RDV003 
6-223 BMW, Mercedes Gen I (Orange - 51 mm) Cross-reference: 1095, RDV004 	6-225/6-225B Aluminum Optional Replacement Valve for 6-207A & DVT-PRO Sensor Cross-reference: VS925A, 34000 	6-228S BMW, Chevrolet, Chrysler, Dodge, Jeep, Mercedes, Mitsubishi, Ram, Toyota Cross-reference: 9066K 
6-231C Adjustable Valve for Acura, Chrysler, Dodge, Honda, Hyundai, Infiniti, Jeep, Kia, Mazda, Mini, Mitsubishi, Nissan, Suzuki, VW, Volvo Cross-reference: VS70 	6-235 Alfa Romeo, Aston Martin, Cadillac, Chevrolet, Infiniti Cross-reference: VS40 	6-236 Hyundai, Kia Cross-reference: VS965 
6-240 Audi, BMW, Mercedes, VW Gen II (Silver - 43mm) Cross-reference: RDV021 	6-241 BMW Gen II (Green - 48mm) Cross-reference: RDV022 	6-242 Audi, BMW, Porsche, VW Gen II (Black - 49mm) Cross-reference: RDV023 
6-243 BMW Gen II (Orange - 51mm) Cross-reference: RDV024 	6-244 Rubber Snap-In Valve Ford, Lincoln, Subaru Cross-reference: VS20 	6-245 Metal Clamp-In High-Pressure Valve Ford, Lincoln Cross-reference: VS240MC 
6-270 Toyota  Cross-reference: VS312	6-284 Brushed Metal BLE Valve - Tesla Cross-reference: VS90 	6-284B / 6-284G Black Metal & Graphite Metal BLE Valve -Tesla Cross-reference: VS90 

TPMS REPLACEMENT VALVES & RETRO KITS

TPMS REPLACEMENT VALVES

6-503

Nissan

Cross-reference:
VS30



6-507

Toyota

Cross-reference:
VS15



6-543C

Ram Dually w/OE Alloy Wheels

Cross-reference:
VS35

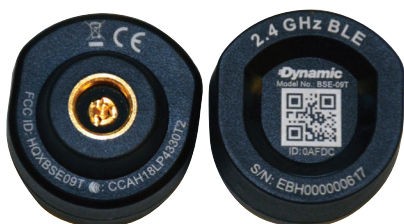


RETRO FIT TPMS SENSORS

Your TPMS (Tire Pressure Monitoring System) is your vehicle reports real-time tire pressure and tire temperature and warns you when one or more tires are significantly under-inflated to avoid unsafe driving conditions, poor fuel economy, and tire wear.

However, there are many instances where TPMS does NOT come standard including trailers, ATV's, motorcycles and more. That's where Dynamic Bluetooth Low Energy (BLE) TPMS Retro Kit sensors can help!

External Retro Kit Sensors No. DY-BLE-E



NOTE: Not
intended to
submerge in
water

- For Metal Valves Only
- Range - 20' (6.096 meters)
- Screws on the valve like a cap
- Swap from one wheel/vehicle to another
- For trucks and bus level tires which can handle up to 185 psi

Internal Retro Kit Sensors No. DY-BLE-I



NOTE: Waterproof
(for submergence in water)

- Range - 20' (6.096 meters)
- Mounts to the inside the tire
- Comes with Rubber Snap-In Valve (6-207A)
- Optional Metal Valves: Aluminum (6-225), Chrome (6-203), Black Aluminum (6-225B)

TPMS Reader No. DY-BLE-R



- Easily install the Repeater with two wires near the back of the hauling vehicle
- No pairing needed
- Extends the signal of sensor up to 16'4" (5 meters)

TPMS ASSORTMENTS

TPMS SERVICE KIT & REPLACEMENT VALVES ASSORTMENTS

Dynamic Service Kit & Replacement Valve Assortments contain all of the popular fittings required for TPMS tire servicing. For both domestic and import cars and light trucks.

Each assortment comes in a durable plastic case that keeps all of the fittings organized and easy to find. The detailed lid insert identifies each fitting with a graphic reference and size. Reorder part numbers, quantities and UPC codes are also shown.

Available Assortments:

See Automotive Service Parts Assortment Catalog for specific part numbers and quantities



Valve Maintenance Kit Assortment No. DY-TPMS-16

OE Replacement Valve Maintenance Kit most popular TPMS service kits for most domestic and imported cars and light trucks.

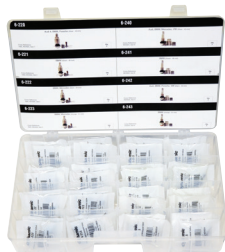
- 17 part numbers
- 350 total pieces
- Case measures: 15-3/4"W x 3-1/4"H x 9"D



Valve Stem Assortment – No. DY-TPMS-16VSR

Assortment of popular TPMS replacement valve stems.

- 16 part numbers
- 52 total pieces
- Case measures: 15-3/4"W x 3-1/4"H x 9"D



Valve Stem Assortment No. DY-TPMS-VSEURO

Assortment includes replacement of corroded or broken OE TPMS valve stem.

- 8 part numbers
- 32 total pieces
- Case measures: 15-3/4"W x 3-1/4"H x 9"D

TPMS STORAGE CABINETS

Storage Cabinet - Plastic 24 Drawers No. CAB-24P



- Sturdy plastic cabinet holds 24 translucent plastic drawers
- Drawers are easy to pull out
- Holds up to 16 TPMS Service Kit packs per drawer
- Holds up to 12 TPMS Replacement Valve packs per drawer
- Cabinet measures: 20"W x 16"H x 6-1/2" D
- Drawer measures: 4-1/2"W x 2-1/2"H x 5-1/2"D

Sensor/Service Kit/Tool Storage Cabinet No. TPMS-72

All of the necessary parts and tools can be securely stored in one place with this deluxe TPMS-72 cabinet. It will hold up to 72 DVT-Sensors and 28 different boxes of service kits and accessories. A pull-out drawer is designed to hold essential TPMS service tools. There is also a slot for an application catalog.



- Pre-drilled holes for wall mounting
- Measures 30"H x 20"W x 9"D
- Weight 54 lbs.

(DVT-Sensors and tools sold separately)



TPMS SPECIALTY VALVES

TPMS SPECIALTY VALVES

**Valve Stem Short Metal -
With Sensor Loop**

No. TPMS-501

- Includes 2 rubber washers that fit valve hole size 0.452 & 0.61
- PSI Rating: 120



**Valve Stem Replacement
for Ram Dually**

No. 6-543C

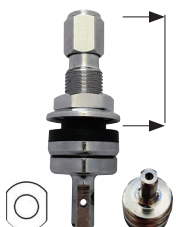
- 45° Bend
- Rim Hole: 9.7 mm



**OEM Valve Short Stem -
Schrader Style**

No. TPMS-102

- Height: 1.105
- PSI Rating: 120



**OEM Valve Short Stem Rubber -
Schrader Style**

No. TPMS-108

- Height: 0.960
- PSI Rating: 80



TIRE ACCESSORIES

TIRE ACCESSORIES

Tire & Air Gauges

DY-1900

**Air Gauge
High-Pressure**



DY-1901

**Air Gauge
Low-Pressure**



DY-1903

**Dual Angle
Gauge**



DY-1904

**Dual Foot
Gauge**



Caps, Cores & Adapters

DY-128B

**Valve Cap -
Nylon (Black)**

Box of 100



DY-128G

**Valve Cap -
Nylon (Grey)**

Box of 100



DY-158

**Black Valve Cap
for Schrader 20008**

Box of 50



TPMS-501

**Low Profile TPMS
Valve Stem Adapter**

Box of 10



DY-1400

**TPMS Nickel-Plated
Valve Core**

Box of 100



TIRE VALVES

TIRE VALVES

Tubeless Snap-In Valves

Made with EDPM Rubber

65 psi maximum cold inflation pressure – maximum rim thickness .156"



Part No.	Height	Valve Hole	Qty.
TR412-50	.875"	.453"	50
TR413-50	.125"	.453"	50
TR413-500	.125"	.453"	500
TR414-50	.125"	.453"	50
TR414-500	.125"	.453"	500
TR415-50	1.25"	.625"	50
TR418-50	.125"	.453"	50
TR418-500	.125"	.453"	500
TR423-50	.125"	.453"	50

Tubeless Snap-In Valves Chrome Sleeve & Cap

Made with EDPM Rubber

65 psi maximum cold inflation pressure – maximum rim thickness .156"



Part No.	Height	Valve Hole	Qty.
TR413C-50	.125"	.453"	50
TR413C-500	.125"	.453"	500
TR418C-50	.125"	.453"	50
TR418C-500	.125"	.453"	500

High-Pressure Snap-In Valves

Brass/Rubber

80 psi maximum cold inflation pressure – maximum rim thickness .205"



Part No.	Height	Valve Hole	Qty.
TR600HP-50	.127"	.453"	50

Bolt-In Valves Flush Mount Nickel/Chrome Plated Brass

Torque at 25-45 in-lbs.



Part No.	Height	Valve Hole	Qty.
TR416C-50	1.44"	.453"/.625"	50
TR559-50	1.00"	.453"/.625"	50

Truck Tire Valves

Straight

For steel wheels with .625" valve hole



Part No.	Height	Valve Hole	Qty.
TR500T-10	2"	.625"	10
TR501T-10	1.5"	.625"	10
TR572T-10	3.75"	.625"	10
TR573-10	4.375"	.625"	10

60° Bend



Part No.	Height	Valve Hole	Qty.
TR545D	.98"/2.6"	.625"	10
TR554D	.78"/2.13"	.625"	10
TR555D	.78"/2.75"	.625"	10
TR543D	.98"/1.38"	.625"	10
TR544D	.98"/1.94"	.625"	10

13°, 23° & 31° Bend



Part No.	Height	Valve Hole	Qty.
TR571E13-10	3.375"	.625"	10
TR500A-10	.98"/1.94"	.625"	10
TR811-10	2.25"	.453"	10
TR572F-10	3.75"	.625"	10

TPMS SERVICE TOOLS

TPMS SERVICE TOOLS

Service procedures for replacing TPMS sensors and installing TPMS service kits require the proper tools. Dynamic has the essential tools needed for servicing TPMS vehicles.

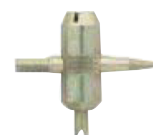
Valve Stem Puller
No. DY-160



TPMS T6 Screwdriver
No. DY-180



4-Way Valve Tool
No. DY-1890



TPMS 4-Way Valve Tool
No. DY-32VNT



This tool is used for removing sensor nuts and seating the sensor grommets. It can be used to remove 11 mm and 12 mm nuts

TPMS Service Tools

Complete TPMS Service Tool Kit
No. DY-312

The DY-312 contains all of the tools needed to service and install TPMS sensors and service kits. All tools are stored and organized in a sturdy plastic case.

Kit No.	Description
DY-001A	Torque Wrench with 11mm & 12mm socket
DY-002A	Torque Tool for Valve & Sensor
DY-150	Valve Core Torque Tool 12 in-lbs. (.45N·m)
DY-164	Grommet Removal Tool
DY-172	Grommet Pick Tool



Torque Wrench with Sockets
No. DY-001A



Torque wrench is used for installing TPMS sensor nuts. Torque range is from 30 in-lbs (3.4 N·m) to 120 in-lbs (13.6 N·m). Includes 11 mm and 12 mm sockets. Comes in a plastic storage case.

Torque Tool for Valve & Sensor **No. DY-002A**



Torque tool is used for installing valves on DVT-sensors. Comes with T10 Torx bit for the clamp-in valve and a S7 socket for the snap-in valve. 12 in-lbs (1.4 N·m)

Valve Core Torque Tool
No. DY-150



Tightens valve cores to OE specifications, 3.5-4 in-lbs (.45 N·m). Meets industry recommended torque values. Can also be used to remove valve cores.

Grommet Removal Tool
No. DY-164



This tool is used to remove the old grommet from the TPMS aluminum valve stem.

Grommet Pick Tool
No. DY-172



This tool is used to help remove old and broken grommets from the TPMS aluminum valve stem.