



MANUAL EXTRACTOR & DISCHARGE PUMP USER'S MANUAL

Part No. JDI-150DE

FOR WARRANTY INFORMATION, PLEASE CALL 800-433-0708

DATE OF PURCHASE: _____

READ AND SAVE THIS MANUAL

FOR SERVICE ASSISTANCE, CALL 800-433-0708 OR VISIT JOHNDOW.COM



Important Safety Information

Read this manual and safety information before using this product.

!WARNING

Indicates a hazardous situation which, if not avoided, could result in death or serious injury.

- For safety reasons, DO NOT use the unit to extract or store gasoline or other highly flammable liquids.
- DO NOT use the unit to extract, siphon or store dangerous chemicals, corrosives, poisons, acids alkalis, solvents or any flammable products. If these liquids were used in the unit, immediately drain, wash and thoroughly clean.
- If the unit was used to extract salt water, eg. Bilge water, thoroughly flush and wash the unit with fresh, clean water.
- The unit is not designed for long term storage of oil, or other fluids. The used oil must be poured in to a suitable container and disposed of in an appropriate manner.
- DO NOT store either the unit or suction tubes near open flames, in areas of high temperatures, direct sunlight, rain or snow.
- DO NOT dismantle, tamper with or adapt this unit for any other purpose than what it was originally intended for. This will void the warranty.
- DO NOT drop, throw or misuse the unit.
- If you accidentally overfill the reservoir, turn OFF the air inlet valve immediately to avoid leaking.
- DO NOT store pressure inside the unit.
- Removing hot oil from an engine may exceed 200°F and cause severe burns and injuries. Take appropriate precautions including letting oil temperature to cool to 194°F before extracting.

!CAUTION

Indicates a hazardous situation which, if not avoided, could result in minor or moderate injury.

- Confirm the pressure gauge is at zero before operating. Press the “PUSH” button to reset the gauge (Figure 1).
- After finishing, move the “PUSH” button to RELEASE the pressure inside the unit. Confirm the pressure gauge is at zero.

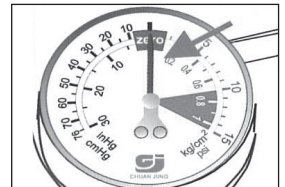


Figure 1

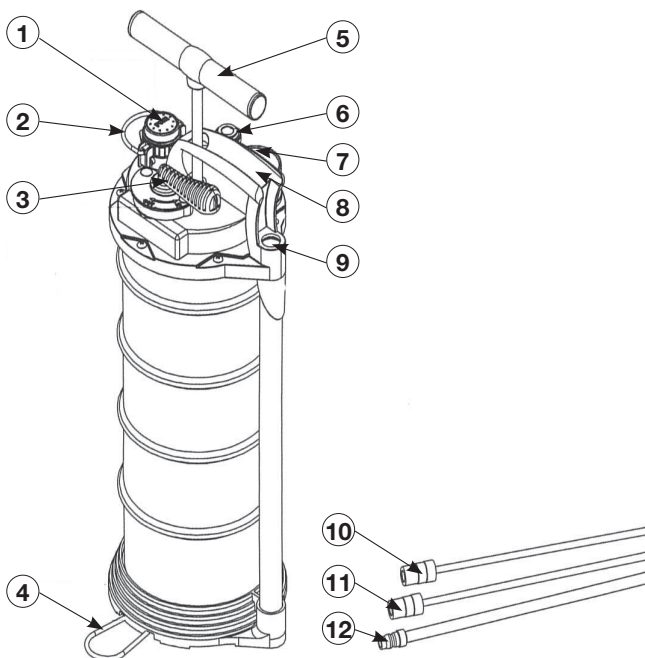
CAPACITY AND DIMENSIONS

Product
Gallons

JDI-150DE
1.5 gallons

Weight

6.4 lbs.



Item No.	Description	Qty.
1	Push Button/Release Button/Outlet	1
2	Pulling Handle	1
3	In/Out Valve Lever	1
4	Base Footstep	1
5	Pump Handle	1
6	Fluid Inlet/Outlet	1
7	Pressure Gauge	1
8	Carry Handle	1
9	Tubing Holder	1
10	5.8mm Probe	1
11	6.7mm Probe	1
12	9.8mm Probe	1

OPERATION

TO EXTRACT

1. Remove the vehicle's oil dipstick (Figure 2).
2. Turn the lever to the "IN" position (Figure 3).
3. Insert the appropriate diameter extension probe into the dipstick hole until it reaches the bottom of the oil pan (Figure 4).
4. Put the main suction probe into the extractor (Figure 5).
5. Push the handle up and down to start the vacuum. The fluid will extract automatically (Figure 6).
6. The "IN" pressure gauge indicator should move counter-clockwise (Figure 7).

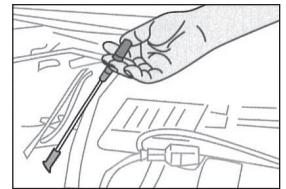


Figure 2

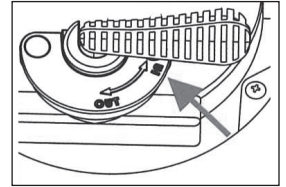


Figure 3

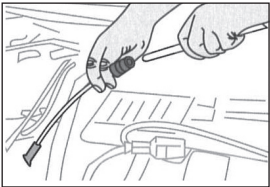


Figure 4

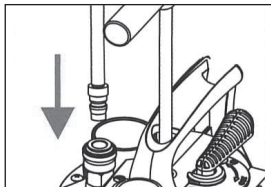


Figure 5

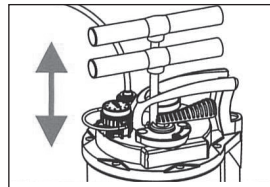


Figure 6



Figure 7

TO DISCHARGE

1. Turn the lever to the "OUT" position (Figure 8).
2. Pump the handle up and down to discharge the fluid (Figure 9).
3. The "OUT" pressure gauge indicator should move clockwise (Figure 10).

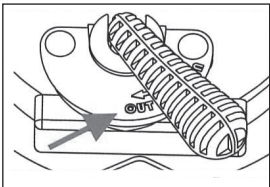


Figure 8

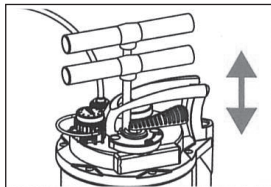


Figure 9

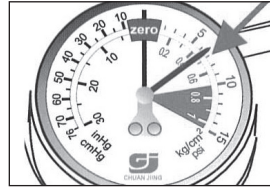


Figure 10

When fluid becomes thicker, we recommend rotating the "PUSH" button counter-clockwise then pour fluid out from this outlet (Figures 11 and 12).

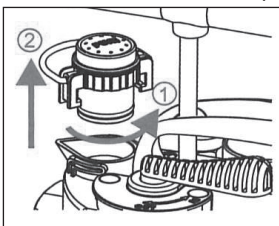


Figure 11

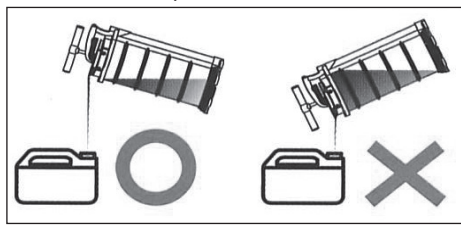


Figure 12

When using the "PUSH" button to pour fluid in or out, please turn the "PUSH" button counter-clockwise to open the inlet/outlet. After using, move the "PUSH" button back by turning clockwise (Figure 13).

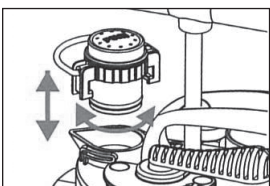


Figure 13

TROUBLESHOOTING

EXTRACTING

While extracting, you may experience the following:

1. Pump handle not operating.
2. The fluid will stop when full and the pump handle will not work.

Solution: Switch the lever to “OUT” position first, then back to the “IN” position to use again.

EVACUATING

1. While putting the main suction tube into the quick connector, be careful of any fast-moving fluid.
2. Switch the lever to the “OUT” position, pump the handle and then the indicator gauge will be in the normal area: 0~10psi (0~0.7kg/cm²) (Figure 14).
3. When the pressure gauge indicator is in the red area 10~15psi / 0.7~1kg/cm², the pressure will release to the normal range (Figure 15).
4. If the pressure is too high during operation, press the “PUSH” button to release pressure inside the unit (Figure 16).

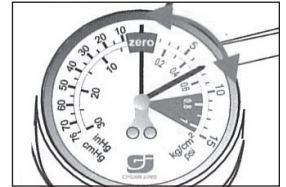


Figure 14

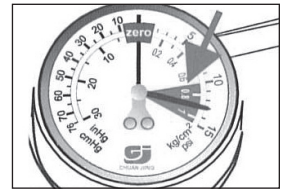


Figure 15

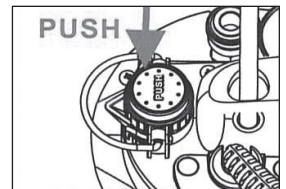


Figure 16