

ALUMINUM RAIL COMPONENTS

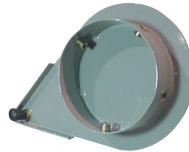
Rail Connectors & Flanges



Rail Connection Flange

- Connects aluminum rails together
- Connection bolts included

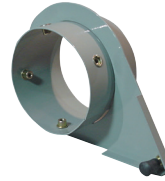
No. TL170A (Automotive)
No. TL230A (Heavy-Duty)



Flange Stop

- Stops sliding crab or drop at the end of the rail system

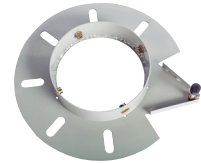
No. FL170A (Automotive)
No. FL230A (Heavy-Duty)



Duct Connecting Flange

- Connects rail to other ducting

No. FCL170A (Automotive)
No. FCL230A (Heavy-Duty)

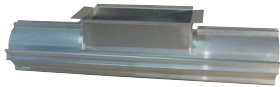


Fan Connecting Flange

- Connects "rail mount" fans to aluminum rail (AF-15 Fans only)

No. FCA170AF (Automotive)
No. FCA230AF (Heavy-Duty)

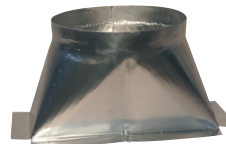
Duct Connections



Rail Vent-Tap Assembly

- Connects ducting in the middle of a rail system run
- 3' rail section fitted with a 5-3/4" x 14" flanged opening
- Use with EuroVent top or side duct connections (see below) or custom ducting

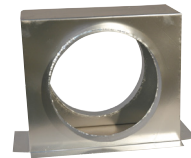
No. ALU-3FT-VTAP (Automotive)
No. ALU-3FT-VTAP-HD (Heavy-Duty)



Top Duct Connection

- Use with Rail Vent-Tap Assembly
- For systems requiring exit point through the roof
- 10" diameter opening
- Attaches using 1/4" self-tapping screws

No. OF-VENT-TOP (Automotive)
No. OF-VENT-TOP-HD (Heavy-Duty)



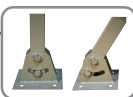
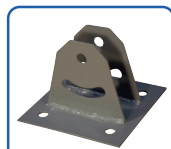
Side Duct Connection

- Use with Rail Vent-Tap Assembly
- Connects two or more system runs where exit point is through a sidewall
- 10" diameter opening
- Attaches using 1/4" self-tapping screws

No. OF-VENT-SIDE (Automotive)
No. OF-VENT-SIDE-HD (Heavy-Duty)

EuroVent Universal Ceiling Brackets

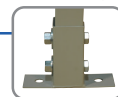
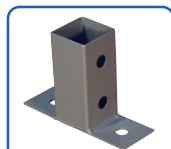
EuroVent Universal Ceiling Brackets provide both flexibility and savings in installation time and labor costs. They are more affordable than conventional Unistrut type products and are just as versatile. Brackets are easily customizable on the job saving valuable time and money.



No. CB-CMA

Adjustable Ceiling Bracket

- Allows for mounting on angles up to 30°
- Clamp or bolt bracket to any surface and secure Mounting Tube
- 6" x 6" Mounting Plate



No. CB-RM

Rail Mount Ceiling Bracket

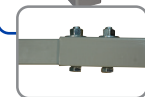
- For use with rail bolts provided
- Mounts directly to the top of EuroVent rail
- 6" x 2" Mounting Plate



No. CB-T60

60" Straight Mounting Tube

- 5' square tube with mounting holes at both ends
- Cut to length or extend for longer applications



No. CB-TC

Mounting Tube Connector

- To extend Mounting Tube

A bracket mounted every 13 feet provides optimal security.

